

Epiplex Process Discovery to Blue Prism RPA

An automated approach to benchmark ideal processes for RPA / Automation.

The Blue Prism/Epiance Technology Ecosystem partnership integrates Epiance's Process Discovery solution with Blue Prism RPA helping organizations to identify the best candidates for automation using workflows making development and deployment of Blue Prism RPA easier, faster and more efficient.

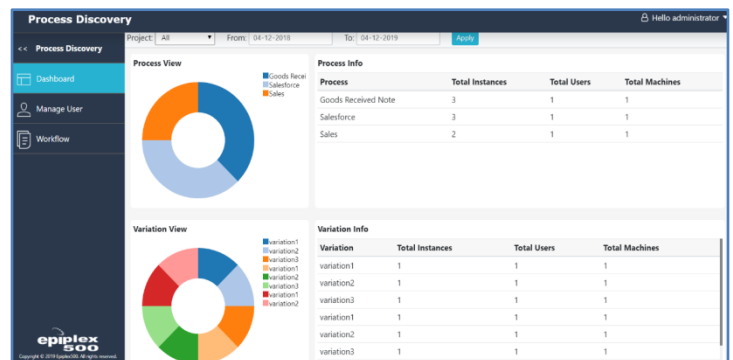
This integration adds the critical skill of discovering the optimal processes & documenting them to Blue Prism Intelligent Automation, giving enterprises the ability to select and prioritize the right process for automation by removing the guesswork involved in manual discovery of processes.

Automated Process Discovery & Documentation

Automatically capture all the process variations and the tacit knowledge of the expert users which helps in not only identifying processes but also helps in making automation recommendations by automatically generating workflows which results in seamless deployment and accelerated implementation of bots for your Blue Prism RPA Implementations.

How it works

Epiplex Process Discovery captures the business process in a highly efficient and effective manner. With our robust capture technology covering a wide range of applications, it ensures an in-depth and accurate process capture through remotely or via a plug and play capture engine. With rule-based Analysis and Process Identification filters the right set of Process information and builds the Process Workflow with all possible variations for large data set.



Technology Alliance Program

Blue Prism & Epiance Partnership Unique Value Proposition

- Eliminating the need of expensive external Process Consultants for identifying processes and its variations.
- Accelerated automation development – Decide and select which workflows to automate.
- Retaining Tacit Knowledge of SME's & capturing all the process variations.
- Get detailed process execution metrics by drilling down workflow blocks.
- Complete process visibility in identifying most efficient paths and discover opportunities that may have been overlooked.
- Discover root causes of process bottlenecks, process deviations and performance loss.
- Provides Process Metrics with TAT for each Path, Groups, Users and Processes.

The Account Lead Contact location process has been illustrated by many more and rich features that are present in the Release 10.0 of Epiance product. Each of these features has been suitably applied.

#	Epiance Feature	Release
1	Process Automation	R10.0
2	Process Automation and exception	R10.0
3	Process Automation and exception	R10.0
4	Process Automation	R10.0
5	Process Automation	R10.0
6	Process Automation	R10.0
7	Process Automation	R10.0
8	Process Automation	R10.0
9	Process Automation	R10.0
10	Process Automation	R10.0
11	Process Automation	R10.0
12	Process Automation	R10.0
13	Process Automation	R10.0
14	Process Automation	R10.0
15	Process Automation	R10.0
16	Process Automation	R10.0
17	Process Automation	R10.0
18	Process Automation	R10.0
19	Process Automation	R10.0
20	Process Automation	R10.0
21	Process Automation	R10.0
22	Process Automation	R10.0
23	Process Automation	R10.0
24	Process Automation	R10.0
25	Process Automation	R10.0
26	Process Automation	R10.0
27	Process Automation	R10.0
28	Process Automation	R10.0
29	Process Automation	R10.0
30	Process Automation	R10.0
31	Process Automation	R10.0
32	Process Automation	R10.0
33	Process Automation	R10.0
34	Process Automation	R10.0
35	Process Automation	R10.0
36	Process Automation	R10.0
37	Process Automation	R10.0
38	Process Automation	R10.0
39	Process Automation	R10.0
40	Process Automation	R10.0
41	Process Automation	R10.0
42	Process Automation	R10.0
43	Process Automation	R10.0
44	Process Automation	R10.0
45	Process Automation	R10.0
46	Process Automation	R10.0
47	Process Automation	R10.0
48	Process Automation	R10.0
49	Process Automation	R10.0
50	Process Automation	R10.0
51	Process Automation	R10.0
52	Process Automation	R10.0
53	Process Automation	R10.0
54	Process Automation	R10.0
55	Process Automation	R10.0
56	Process Automation	R10.0
57	Process Automation	R10.0
58	Process Automation	R10.0
59	Process Automation	R10.0
60	Process Automation	R10.0
61	Process Automation	R10.0
62	Process Automation	R10.0
63	Process Automation	R10.0
64	Process Automation	R10.0
65	Process Automation	R10.0
66	Process Automation	R10.0
67	Process Automation	R10.0
68	Process Automation	R10.0
69	Process Automation	R10.0
70	Process Automation	R10.0
71	Process Automation	R10.0
72	Process Automation	R10.0
73	Process Automation	R10.0
74	Process Automation	R10.0
75	Process Automation	R10.0
76	Process Automation	R10.0
77	Process Automation	R10.0
78	Process Automation	R10.0
79	Process Automation	R10.0
80	Process Automation	R10.0
81	Process Automation	R10.0
82	Process Automation	R10.0
83	Process Automation	R10.0
84	Process Automation	R10.0
85	Process Automation	R10.0
86	Process Automation	R10.0
87	Process Automation	R10.0
88	Process Automation	R10.0
89	Process Automation	R10.0
90	Process Automation	R10.0
91	Process Automation	R10.0
92	Process Automation	R10.0
93	Process Automation	R10.0
94	Process Automation	R10.0
95	Process Automation	R10.0
96	Process Automation	R10.0
97	Process Automation	R10.0
98	Process Automation	R10.0
99	Process Automation	R10.0
100	Process Automation	R10.0

The Account Lead Contact location process captured, identifies the many existing rich features of the Epiance product that we use.

#	Epiance Feature	Release
11	Process Automation	R10.0
12	Process Automation	R10.0
13	Process Automation	R10.0
14	Process Automation	R10.0
15	Process Automation	R10.0
16	Process Automation	R10.0
17	Process Automation	R10.0
18	Process Automation	R10.0
19	Process Automation	R10.0
20	Process Automation	R10.0
21	Process Automation	R10.0
22	Process Automation	R10.0
23	Process Automation	R10.0
24	Process Automation	R10.0
25	Process Automation	R10.0
26	Process Automation	R10.0
27	Process Automation	R10.0
28	Process Automation	R10.0
29	Process Automation	R10.0
30	Process Automation	R10.0
31	Process Automation	R10.0
32	Process Automation	R10.0
33	Process Automation	R10.0
34	Process Automation	R10.0
35	Process Automation	R10.0
36	Process Automation	R10.0
37	Process Automation	R10.0
38	Process Automation	R10.0
39	Process Automation	R10.0
40	Process Automation	R10.0
41	Process Automation	R10.0
42	Process Automation	R10.0
43	Process Automation	R10.0
44	Process Automation	R10.0
45	Process Automation	R10.0
46	Process Automation	R10.0
47	Process Automation	R10.0
48	Process Automation	R10.0
49	Process Automation	R10.0
50	Process Automation	R10.0
51	Process Automation	R10.0
52	Process Automation	R10.0
53	Process Automation	R10.0
54	Process Automation	R10.0
55	Process Automation	R10.0
56	Process Automation	R10.0
57	Process Automation	R10.0
58	Process Automation	R10.0
59	Process Automation	R10.0
60	Process Automation	R10.0
61	Process Automation	R10.0
62	Process Automation	R10.0
63	Process Automation	R10.0
64	Process Automation	R10.0
65	Process Automation	R10.0
66	Process Automation	R10.0
67	Process Automation	R10.0
68	Process Automation	R10.0
69	Process Automation	R10.0
70	Process Automation	R10.0
71	Process Automation	R10.0
72	Process Automation	R10.0
73	Process Automation	R10.0
74	Process Automation	R10.0
75	Process Automation	R10.0
76	Process Automation	R10.0
77	Process Automation	R10.0
78	Process Automation	R10.0
79	Process Automation	R10.0
80	Process Automation	R10.0
81	Process Automation	R10.0
82	Process Automation	R10.0
83	Process Automation	R10.0
84	Process Automation	R10.0
85	Process Automation	R10.0
86	Process Automation	R10.0
87	Process Automation	R10.0
88	Process Automation	R10.0
89	Process Automation	R10.0
90	Process Automation	R10.0
91	Process Automation	R10.0
92	Process Automation	R10.0
93	Process Automation	R10.0
94	Process Automation	R10.0
95	Process Automation	R10.0
96	Process Automation	R10.0
97	Process Automation	R10.0
98	Process Automation	R10.0
99	Process Automation	R10.0
100	Process Automation	R10.0

The Account Lead Contact location process captured, identifies the many existing rich features of the Epiance product that we use.

About Blue Prism

As the pioneer, innovator and market leader in Robotic Process Automation, Blue Prism (AIM: PRSM) delivers the world's most successful Digital Workforce. The company's intelligent digital workers provide business leaders with new operational capacity and intelligent skills to automate mission critical business processes, while meeting the requirements of the most demanding IT environments, where security, compliance and scalability are paramount. Blue Prism provides a scalable and robust execution platform for best-of-breed AI and cognitive technologies and has emerged as the trusted and secure RPA platform of choice for the Fortune 500. For more information, visit www.blueprism.com

About Epiance

Epiance is the leading provider of enterprise software that helps companies manage their IT driven business process transformations successfully. Our products deliver a combination of process automation, knowledge transfer, performance support and process improvement capabilities that reduce costs, increase productivity and improve business performance. For more information, visit www.epiplex500.com